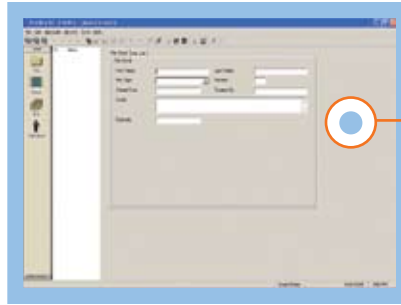


■ Infolinx SE

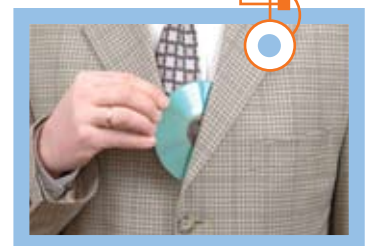


Infolinx SE is a client-server data-driven application that may be deployed against Microsoft SQL Server, MS Access, or Oracle. The design of this product is ideal for your business growth because it is scalable to hundreds of users operating with millions of records. Infolinx SE is a mature, feature-rich, complete records management application.

Infolinx SE will save your company time, money, and resources by providing time-tested software solutions with an intuitive easy-to-use interface. Using standard Windows menus and tool bars, Infolinx SE allows users to search, view, and request records using a simple point and click interface. Users with appropriate privileges can also perform other additional functions like creating, editing, and transferring records, as well as creating new system users and establishing label conventions. The Infolinx SE enhanced reporting capabilities facilitates superior communication throughout your organization. To ensure efficiency, Infolinx SE integrates the latest technologies including barcodes, imaging, electronic document management, and color label printing into the Infolinx SE application.

A Simple, Familiar, and User-Friendly Interface

Infolinx is designed with a friendly graphical interface. All functions are easily performed from one main data view





Industry and Legal Compliance

Infolinx SE is part of an integral solution for compliance with such industry standards as Sarbanes-Oxley and the Health Insurance Portability and Accountability Act (HIPAA).

Fully Integrated Barcode

Using tethered and portable barcode, items can be instantly checked in or out of the central repository, or transferred to a new location without manual data entry. Action barcodes perform quick, simple system functions without touching the keyboard. The ability to perform fast task completion will make an efficient and happy staff.

Robust Feature Set

Every Infolinx SE application includes such features as:

- Integrated retention schedule development and execution
- Full-featured, seamlessly integrated color and monochrome label printing
- Full life-cycle tracking from creation to disposition
- Powerful searching with Advanced Query capability
- On-line, express request
- Comprehensive reporting capability
- Event notification
- Integrity sweep functionality
- User definable preferences
- Simple and hands-free check-in/check-out
- Complete audit history of all records
- Data interchange
- Role-based security model
- Optional basic Image and EDoc module functionality

